

# Extend the power of WSUS!

## EminentWare's WSUS Extension Pack™

### PRODUCT HIGHLIGHTS

**New!** **3<sup>rd</sup> party updates!** Extend WSUS to deploy, manage, and report on both Microsoft and 3<sup>rd</sup> party patches and applications from a central point of control

**New!** **Create packages** to quickly and easily deploy any MSI, EXE, or MSP

**Get total control of update management** with immediate updates, scheduling, reboots, detailed update approval management & more

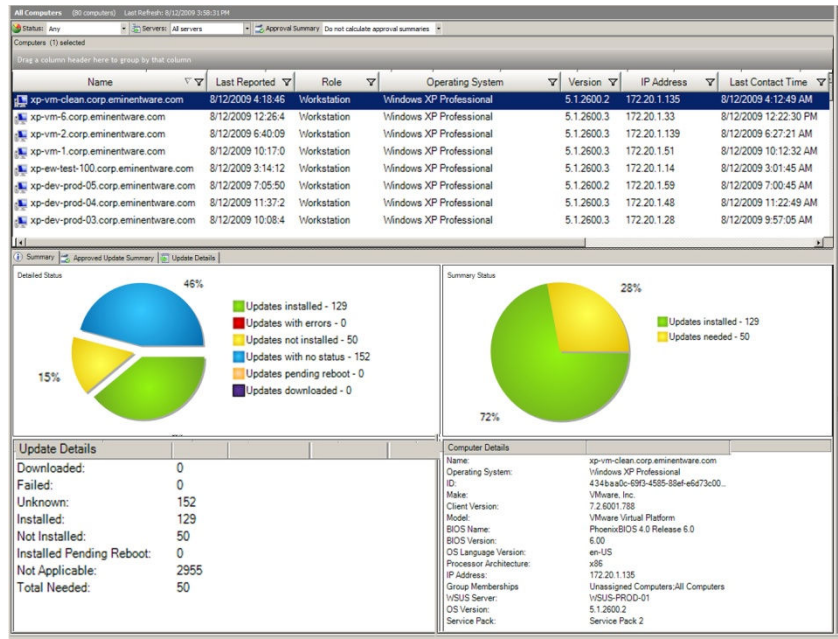
**Easily create and distribute management reports** – use built-in reports or easy-to-use ad hoc reporting

**Dynamically select machines or updates** based on groups, dates, location, and more

**Quickly determine the status of every update**, on every machine from a central point of control – or find missing updates

**Enable enterprise inventory** data collection and discovery of 200+ system details including services, device drivers, registry entries, users, groups, files, and more

**Discover rogue, unauthorized, or improperly configured machines**, domains & workgroups



Powerful reporting: Shown here, a quick summary and details about which machines have or have not reported to WSUS.

### EminentWare + WSUS = More power, more control, more flexibility

EminentWare's WSUS Extension Pack is designed to extend the capabilities of Microsoft's Windows Server Update Services (WSUS), offering a powerful solution for deploying, managing, and reporting on updates, applications, and configuration settings throughout an IT environment. The WSUS Extension Pack enables companies to add key IT management functionality to their existing WSUS installations, creating a more flexible, more powerful enterprise update and configuration management solution that is extremely cost-effective.

### Enterprise-capable Architecture

EminentWare's WSUS Extension Pack is designed with an agent-less architecture that is easy to install, can scale out to large enterprises, or can work efficiently and cost-effectively in smaller environments. EminentWare can also be configured for low-bandwidth, remote, or distributed enterprises.

# EminentWare's WSUS Extension Pack

## AUTOMATE & CONTROL ROUTINE ADMINISTRATION

- Use "Wizard-driven" update management to get multiple servers & desktops into compliance quickly
- Schedule updates to occur when convenient, including monthly, specific days, or calendar events
- Force real-time download and install of updates from the Update Server
- Dynamically choose computers to be updated based on Active Directory Domain, Organizational Unit membership, WSUS computer group membership, computer role, computer last contact time & more
- Quickly choose which patches to implement based on date released or other criteria
- View & manage computer configurations in real-time without impacting end-users
- Use advanced shutdown, reboot & wake-on-LAN capabilities
- Force refresh of Group Policy on machines
- Diagnose, repair & force re-install of the Windows Update Agent
- Organize machines into flexible computer groups for easier management – including WSUS computers & groups
- Use detailed approval delegation to get required approval quickly & easily, quickly implement approved updates

## 3<sup>RD</sup> PARTY PATCH & APPLICATION MANAGEMENT

- Quickly & easily deploy, manage & report on third-party patches and applications enterprise-wide, leveraging your existing WSUS installation
- Create packages to deploy any MSI, MSP, or EXE
- Manage Microsoft & 3<sup>rd</sup> party patches or applications from a central point of control

## ADVANCED REPORTING: DOCUMENT & COMMUNICATE

- Get great depth & breadth in reporting for more effective update approvals, easier report targeting
- Use all-in-one reports for multiple layers of update management information in a single report
- View & report on client & server configurations, update history & status
- Use out-of-the-box reporting or create custom reports with an easy-to-use custom report builder
- Create reports to prove accurate auditing & configuration change control
- Execute reports immediately or on a schedule
- Configure report export formats & set automatic email notifications

## DISCOVERY: KNOW YOUR NETWORK

- Discover domains, workgroups & TCP/IP connected devices and services
- Perform enterprise-wide inventory on desktops & servers
- Identify unmanaged or rogue machines & devices on the network, improperly configured servers & workstations, or machines that are running vulnerable software applications
- View & edit the configuration of resources on the network without disturbing end-users
- Register & inventory Windows Server Update Services, managed computers, updates & more

The screenshot displays the 'Third Party Updates' management console. At the top, there are filters for 'Approval State' (Any Approval State) and 'Update State' (All Updates). Below this is a table of updates with columns for Title, Classification, Declined, Arrival Date, Approval, State, and Release Date. The table lists various updates such as '.NET Framework 2.0 Service Pack 2', 'Adobe Reader 9.1.2 - Security Update', and 'Adobe Reader 9.1 (Incremental Update 9.1.2)'. A summary pie chart is shown below the table, with a legend indicating: Computers installed: 0, Computers with errors: 0, Computers needing: 3, Computers with no status: 12, Computers pending reboot: 0, Computers downloaded: 0, and Computers not applicable: 65. A description for the selected update, 'Adobe Reader 9.1 (Incremental Update 9.1.2)', is shown at the bottom, mentioning critical vulnerabilities in Adobe Reader 9.1.1 and Acrobat 9.1.1 and earlier versions.

3<sup>rd</sup> party support: Extend WSUS to deploy, manage & report on non-Microsoft updates & apps, such as Adobe Reader.

## SYSTEM REQUIREMENTS

### Management Console

- Windows XP SP2 & SP3, Windows Vista, or Windows 7
- Windows Server 2003 or Windows Server 2008

### Management Server

- Windows XP SP2 & SP3, Windows Vista
- Windows Server 2003 or Windows Server 2008

### Supported Managed Platforms

- Windows XP SP2 & SP3, Windows Vista
- Windows 2000 SP4 and above
- Windows Server 2003 or Windows Server 2008

### Automatically Installs

- Microsoft .NET Framework v3.5
- Microsoft Management Console v3.0
- Microsoft SQL Server 2005 SP2 (Express Version)

## ABOUT EMINENTWARE

EminentWare provides highly scalable, cost-effective and powerful enterprise update and configuration management solutions. EminentWare extends the power of Microsoft Windows Server Update Services (WSUS), providing powerful update reporting, greater control over update scheduling and reboots, immediate updates, full discovery and inventory, as well as update management for 3<sup>rd</sup> party applications.

Download a free 30-day trial of EminentWare's WSUS Extension Pack today. Visit: [www.eminentware.com](http://www.eminentware.com).

